

Site Notice Placement

Project: 1680

Site Notice:

NOTIFICATION REGARDING OPPORTUNITY TO PARTICIPATE IN ENVIRONMENTAL AUTHORIZATION APPLICATION PROCESS FOR THE PROPOSED AQUA FARMING EXPANSION OF AGRICULTURE INTO NATURAL AREAS ON THE FARM DROOGFONTEIN IN THE SOL PLATTE LOCAL MUNICIPALITY, NORTHERN CAPE PROVINCE, SOUTH AFRICA.

Aqua Farming (Pty) Ltd (hereafter referred to as the applicant) has appointed Environmental Impact Management Services (Pty) Ltd (EIMS) as the Environmental Assessment Practitioner (EAP) to assist with undertaking the required authorization processes (including the statutory public participation) and to compile and submit the required documentation in support of application for Environmental Authorization (EA) in accordance with the National Environmental Management Act, NEMA (Act 107 of 1998 as amended), GNMR 2014 (Licensing Notice 2) and GNMR 2014 (Licensing Notice 3). Water Use Licence (WUL) for various relevant water uses in accordance with the National Water Act – NWA (Act 36 of 1998). Additional activities to be applied for may be raised and will be confirmed during the process.

The applicant wishes to develop pivot irrigation systems for the cultivation of seed potatoes, potatoes, onions, and various grass-fed crops. The development of these pivots will occur in phases/stages over the course of 7 years. With each phase/stage, approximately 175 Ha will be cleared for the pivots. Therefore, after approximately 7 years a total of 1250 Ha will have been cleared. The total area that will be cleared in support of the Environmental Authorization application for the project is 1800 Ha. The proposed project is located approximately 20 km North of Kimberley, on the Remainder of the Farm Bupan 51, the Remainder of the Farm Wippan 52, Portion 2 of the Farm Eerste Aan Leg 50 and a section of Portion 18 of the Farm Drogfontein 62, in the Sol Plaatje Local Municipality, Frances Baard District Municipality, Northern Cape Province. Additionally, Aqua Farming wishes to build a buffer dam as a reservoir for irrigation water, with a capacity of approximately 50 000 m³ of water. This water will be sourced from the Vial River. The current existing water use licence will need to be amended accordingly.

EIMS will be following the procedures defined in the Environmental Impact Assessment (EIA) Regulations (GNR62 of 2014, as amended) for undertaking a Scoping and Environmental Impact Assessment (EIA) and Water Use Licence Application (WULA) process. In accordance with Chapter 6 of the EIA Regulations, a public participation process will be undertaken. You are hereby invited to register and comment on the proposed project and application(s). By registering as an interested and affected party you consent to the collection and processing of your personal information as per the EIMS Privacy Policy available at www.eims.co.za/public-participation. In order to avoid missing out on opportunities for public participation please submit (EAP) registrations, or any queries, comments, or concerns with regards to this application, as soon as possible to EIMS at:

KENNINGSKOP MET BETREFFING TOT GELEENTHEDE OM DEEL TE NEEM AAN OMGEWINGSIMPACTEERING AANSONDERINGS VAN DIE VOORGESTELDE AQUA-BOERERIJ UITWIDING VAN LANDOUER NA NATURELLE GEBIED OP DIE PLAAS DROOGFONTEIN, IN DIE SOL PLATTE PLAASIGE MUNISIPALITEIT, NOORD-KAAP PROVINSIE, SUID-AFRIKA.

Aqua Farming (EIMS) Rpk (hierna na verwys as die aansoekster) het Environmental Impact Management Services (EIMS) Rpk (EIMS) as die Omgewingsimpakteerders (EAP) aangestel om te help met die oordrag van die vereiste magtigingsprosesse (insluitend die statutêre openbare deelname), en om die vereiste dokumentasie saam te stel en in te dien ter ondersteuning van aansoek vir Omgewingsmagtiging (EA) in ooreenstemming met die Nasionale Omgewingsdienswet, NEMA (Wet 107 van 1998 – soos gewysig), GNMR 2014 (Magskrywing 2) en GNMR 2014 (Magskrywing 3). Watergebruiksofskied (WULA) vir verskeie relevante watergebruik in ooreenstemming met die Nasionale Waterwet – NWA (Wet 36 van 1998). Bykomende aktiwiteite waarvoor aansoek gedoen moet word, kan gedetermineer word en sal tydens die proses bevestig word.

Die aansoekster wil agterligteeringsontwikkeling ontwikkel vir die verbod van moere, aartappels, aie en verskeie grasgevoerde. Die ontwikkeling van hierdie agterligteer sal in fases/tiese oor die loop van 7 jaar plaasvind. Met elke fase/tiese sal ongeveer 175 Ha vir die agterligteer ontwikkel word. Die totale oppervlakte wat daartydens sal word oor die loop van 7 jaar sal 1250 Ha wees. Die totale oppervlakte wat ter ondersteuning van die Omgewingsmagtigingsaansoek vir die projek geskorsener sal word, is 1800 Ha. Die voorgestelde projek is ongeveer 20 km Noord vanaf Kimberley geleë, op die restant van die plaas Bupan 51, die restant van die plaas Wippan 52, Gebiede 2 van die plaas Eerste Aan Leg 50 en 'n gedeelte van Gebiede 16 van die plaas Drogfontein 62, in die Sol Plaatje Plaaslike Munisipaliteit, Frances Baard Distrikmunisipaliteit, Noord-Kaap Provinsie. Daarbenewens wil Aqua Farming 'n bufferdam bou as 'n reservoer vir bewoedingwater met 'n kapasiteit van ongeveer 50 000 m³ water. Hierdie water sal uit die Vialrivier entree word. Die huidige bestaande watergebruiksofskied sal diensooreenkomstig gewysig moet word.

EIMS sal die prosedures volg soos omskryf in die Omgewingsimpakteerders (EAP) Regulasies (GNR62 van 2014, soos gewysig) vir die oordrag van 'n Omgewingsmagtigingsaansoek (EAP) en Watergebruiksofskied-aansoek (WULA) proses. In ooreenstemming met Hoofstuk 6 van die EIA-regulasies, sal 'n openbare deelnameproses onderneem word. U word hiermee uitgenooi om te registreer en kommentaar te lewer op die voorgestelde projek en aansoek(s). Deur te registreer as 'n belanghebbende en geïnteresseerde party stem jy in dat die versameling en verwerking van jou persoonlike inligting soos per die EIMS Privacybeleidingskrywing beskikbaar by www.eims.co.za/public-participation. Om te verhoed dat geleentheid vir publieke deelname misgeloop word, dan asseblief EAP-registrasies, of enige navraag, kommentaar of bekommerde met betrekking tot hierdie aansoek, so gou moontlik in by EIMS by.

KITSKO E E MAKEBANA LE TSHONO YA GO NINA LE SEARE MO THULAGANYONG YA GO DIRA KOPO YA TELA YA TIKOLOGO YA POKESE YA TEMOTHO YA METSI EE BULAGANTSWENG YA GO ATOKOSA TEMOTHO MO MAFELONG A TULAGO MO POLESANG YA DROOGFONTEIN, MO MMASIPALING WA SOL PLATJE, POROFENSE YA NORTHERN CAPE, MO AFRICA BORWA.

Aqua Farming (Pty) Ltd (jy e tla bawang moap) e thomale Environmental Impact Management Services (Pty) Ltd (EIMS) jwa Modiri wa Tshokoleho ya Tikoogo (EAP) go thusa ka go dira dithulaganyo tse di thokangwa tsa tseletso (go akaretsa le go tsaya karolo ga setshaba ka fa melong). Le go bokaanya le go romela dithomane tsa di thokangwa go thagetsa kopo ya Tameletso ya Tikoogo (EA) go ya ka Modiri wa Bontshaba wa Taelo ya Tikoogo, NEMA (Molao 107 wa 1998 – jwaka e bawatswe), GNMR 2014 (Kitsiso ya Lemaane 2) le GNMR 2014 (Kitsiso ya Lemaane 3). Lemaane ya Tinto ya Metsi (WUL) ya tinto e e fanganganyo ya metsi e e mapotso go ya ka Modiri wa Bontshaba wa Metsi – NWA (Molao 36 wa 1998). Ditso tse dingwe tse di tshwanetseng go kopwa di ka thagiswa mme di tla ntshelelwa ka nako ya thulaganyo.

Mokopodi e kesa go dira dithulaganyo tse go noutsa tsa pivot tsa go jala ditapole tsa pes, dipotole, dijele, le dipole tse di fanganganyo tse di fanganganyo ka bojane. Thabolelo ya dipole tse e tla dingala ka dikgato/dipole mo tsaone ya dingwaga di le bupe 7 yrs. Ka kgato/dipole ntshe le ntshe, go tse sholewa di pivot di ka nna 175 Ha. Palopole ya kgato e e tla phelawang mo tsaone ya dingwaga di le 7 e tla nna 1250 Ha. Palopole ya kgato e e tla thokangwa sekakawa go thagetsa kopo ya Tameletso ya Tikoogo ya go tshelela go tshelela di le 1800. Porokole e e tshobizangwe e tshobizwa mo e e nang okokomara di le 20 kwa Bokone go tswa kwa Kimberley, mo Diponting Bupan 51 moatshelele ka karolo, Wippan 52 moatshelele ka karolo, Tenter Aan Leg 50 karolo 2, le Drogfontein 62 dikanole 16, mo Mmasipaling wa Sol Plaatje forsa, Porofense ya Kapa Bokone. Mo godimo ga moo, Aqua Farming e tshaga go aga karamo le le tla bawang metsi a a dithobang go noutsa ka sekakawa sa metsi a le 50 000 m³. Metsi aya e tla tswa mo Ntshe ya Vial. Dikamane tse di long tsa go dira metsi di tla thaga go tshelela go ya ka seame.

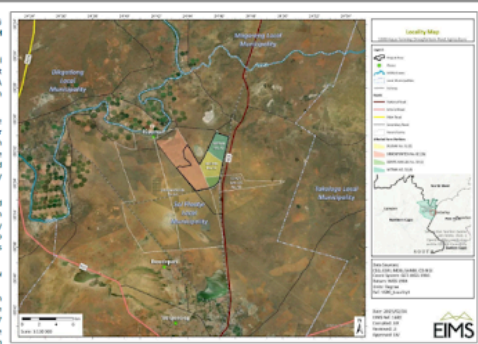
EIMS e tla bo e tshobizwa mo dithobang mo dithobang wa Tshokoleho ya Tikoogo (EAP) (GNR62 ya 2014, jwaka e bawatswe) ya go dira thulaganyo ya Tshokoleho ya Tikoogo le Dipolelo tsa Tikoogo (EA) le Kopo ya Lemaane ya Tinto ya Metsi (WULA). Go ya ka Kgato 6 ya Molelane ya EA, go tla dira thulaganyo go go tsaya karolo ga setshaba. O tshobizwa go tshelela ka porokole e e tshobizangwe le dikopo. Ka go tshelela jwaka motho yo o nang le kgathogo le yo o amang o dumetse go kokomanya le go dirwa ga thhedimotso ya gago ya porofetso go ya ka Kitsiso ya Sephele ya EIMS e e ling tsa go www.eims.co.za/public-participation. Go tla go fanganganyo ka dikomane tsa go tsaya karolo ga setshaba tse tsewetswe romela ikwadiso ya EAP, agatso dipotso dipole, ditshwalo, agatso matshwenyago mabapi le kopo eno, ka bonako go bo kgonegang kwa EIMS mo go.

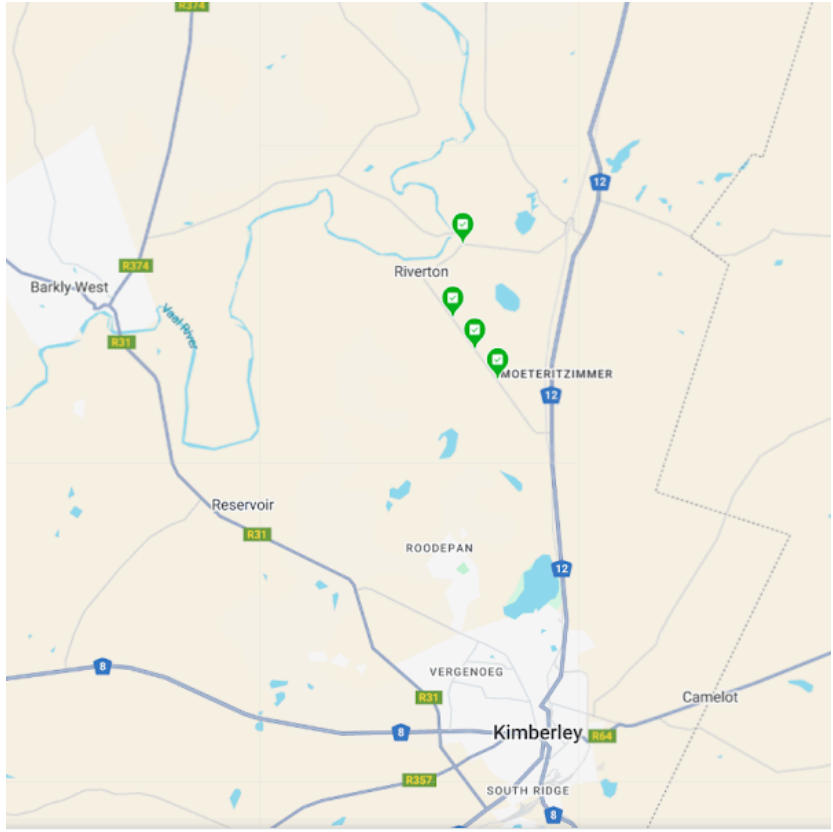
Contact Person/ Kontak Persoon/ Mofho yo o ka kgoganganyo le ene: Alex Mjipa
EIMS Reference Number/ EIMS Verwysingsnommer/ Nomoro ya Tshapetso ya EIMS: 1680
Postal Address/ Posadres/ Adresse ya Posa / P.O. Box 2083, Fingertse 2123

Fax/Faks/Fax: (086) 571 9047
E-mail/ E-pos/ Inlele: ap@eims.co.za
Telephone/ Telefon/ Mopole: (011) 789 7370



Scan Here





A1 Notice: 23/04/2025 13:59:46; **GPS Coordinates:** -28.573149, 24.740297



1

A1 Notice: 23/04/2025 14:02:16; **GPS Coordinates:** -28.558763, 24.727989



2

A1 Notice: 23/04/2025 14:03:36; **GPS Coordinates:** -28.543090, 24.715956



3

A1 Notice: 23/04/2025 14:08:36; GPS Coordinates: -28.507552, 24.721280



4